

Recliner Chairs



Scarlett Series:

- 3 position recliner chair (24°, 35°, and 52° recline)
- Available in standard and bariatric models
- Ideal for visitors and short term stay patients
- Variety of options include: IV pole, arm caps, flip up tables, and heat and massage

Daphne Series:

- Infinite recline positions from seated to fully flat
- Available in standard and bariatric models
- Integrated recessed handle to activate recline
- Pull-lever to activate foot rest
- Extra wide seat and arms ideal for LDR and NICU areas
- Options include: Trendelenberg, IV pole, arm caps, foot transport tray, flip up tables, heat and massage



Tristan Series:

- 3 position treatment recliner
- Available in standard, bariatric and power recliner models
- Ideal for Dialysis, Oncology, and ICU areas
- Variety of options include: Swing away arms, removable arms, IV pole, trendelenberg, flip up table, foot transport tray, O² tank holder, etc...



Customize Your Recliner Chairs...

Positions



Scarlett Series



Daphne Series



Tristan Series

Options and Features

Scarlett Series



Polyurethane or Wood Arm Caps



IV Pole



3" Non-Marking Casters



Flip-Up Side Table



Pivoting Table (Single or Double)



Metal Push Bar



Pillow Back



Central Braking



Heat and Massage



Accessory Holder

Daphne Series



Trendelenberg



IV Pole



Lever-Controlled Foot Rest



Recessed Handle for Recline



Polyurethane or Wood Arm Caps



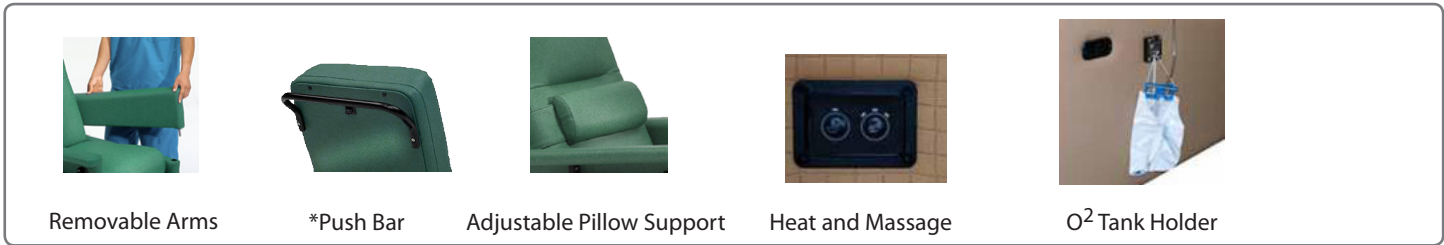
Metal Push Bar



Pillow Back



Tristan Series



Dimensions

Scarlett Series

Standard	Height: 46.75"	Width: 29.25"	Depth: 37.5"	Depth (Reclined): 70"
	Seat Dimension: 20"W x 21"D x 19"H		Weight Capacity: 350lbs	
Bariatric	Height: 46.75"	Width: 33"	Depth: 37.5"	Depth (Reclined): 70"
	Seat Dimension: 24.5"W x 21"D x 19"H		Weight Capacity: 500lbs	

Daphne Series

Standard	Height: 44"	Width: 33"	Depth: 39"	Depth (Reclined): 73"
	Seat Dimension: 23.5"W x 21"D		Weight Capacity: 500lbs	
Bariatric	Height: 44"	Width: 37"	Depth: 39"	Depth (Reclined): 73"
	Seat Dimension: 28.5"W x 21"D		Weight Capacity: 750lbs	

Tristan Series

Standard	Height: 43"	Width: 32"	Depth: 30.5"	Depth (Reclined): 74"
	Seat Dimension: 22.5"W x 18"D		Weight Capacity: 300lbs	
Bariatric	Height: 43"	Width: 37"	Depth: 30.5"	Depth (Reclined): 74"
	Seat Dimension: 27.5"W x 21"D		Weight Capacity: 500lbs	

Health Grade Vinyls and Fabrics

Grade 3



Laredo - Biscotti (L15)



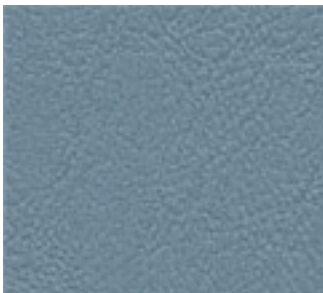
Laredo - Brindle (L19)



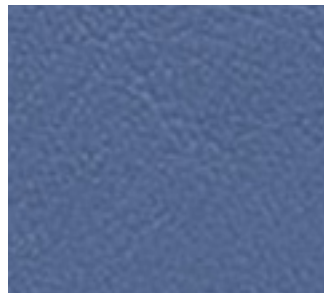
Laredo - Dill (L30)



Laredo - Brandy (L03)



Laredo - Niagra (L32)



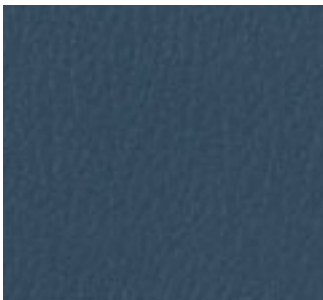
Laredo - Blue Moon (L26)



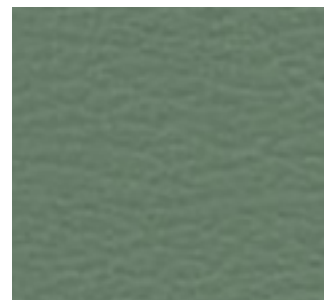
Laredo - Flint (L22)



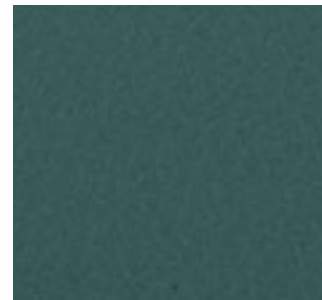
Avant - Grape (AV146)



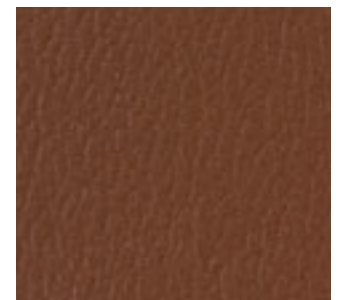
Avant - Slate Blue (AV204)



Avant - Dusty Jade (AV136)



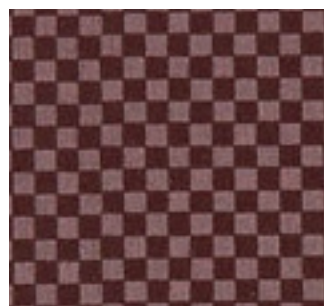
Avant - New Emerald (AV206)



Avant - Terra Cotta (AV118)



Checkmate - Chardonnay (CM52)



Checkmate - Currant (CM62)

Health Grade Vinyls and Fabrics

Grade 4



Oxford - Spruce (OXF20)



Oxford - Ice (OXF16)



Oxford - Celery (OXF19)



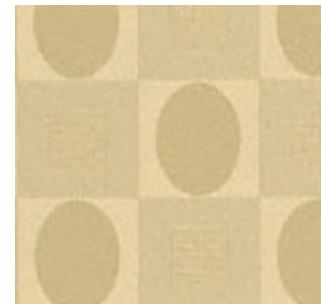
Oxford - Stone (OXF01)



Oxford - Lapis (OXF18)



Oxford - Charcoal (OXF23)



Geomet - Shine (XGN13)



Geomet - Patina (XGN)

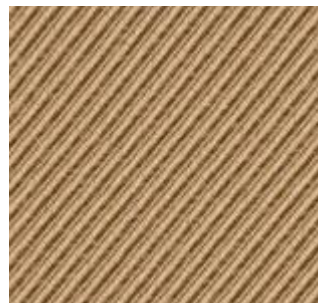
Grade 5



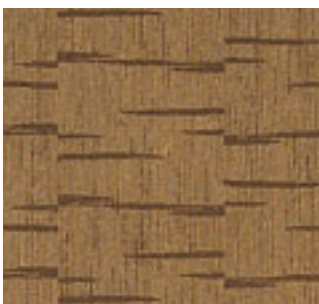
Crypton Twill - Flax (CRY712)



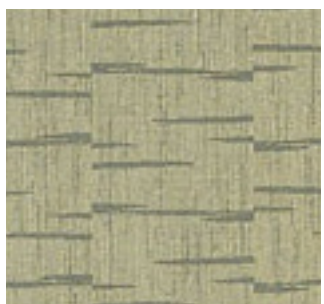
Crypton Twill - Elephant (CRY714)



Crypton Twill - Taffy (CRY713)



Dash - Cocoa (DAS15)



Dash - Sage (DAS25)



Dash - Steel (DAS31)

Health Grade Vinyls and Fabrics

Grade 7



Script - Palm (SCT20)



Script - Mink (SCT18)



Script - Croissant (SCT16)



Script - Olivine (SCT24)

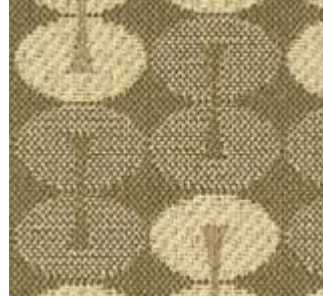
Grade 7



Catwalk - Chic (61421)



Beeline - Hot Cocoa (61358)



Couplet - Grey Flannel (61646)



Couplet - Surf and Turf (61646)

Grade 8

Grade 8



Lucky Charm - Natural (61782)



Lucky Charm - Denim (61786)

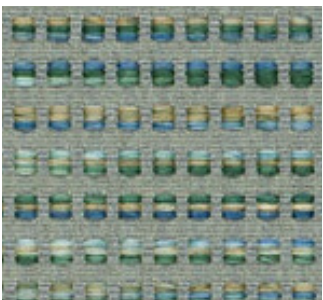


Lucky Charm - Glade (61780)

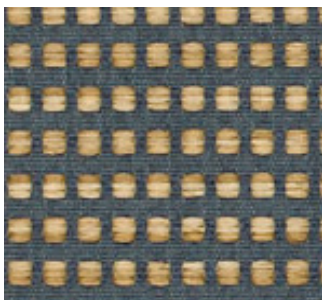


Sunburst - Dusk (61705)

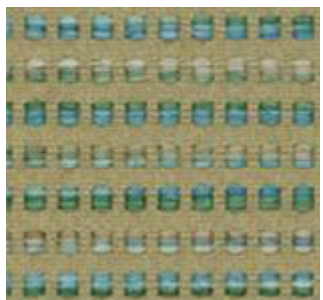
Grade 9



Block Party - Surf (61773)



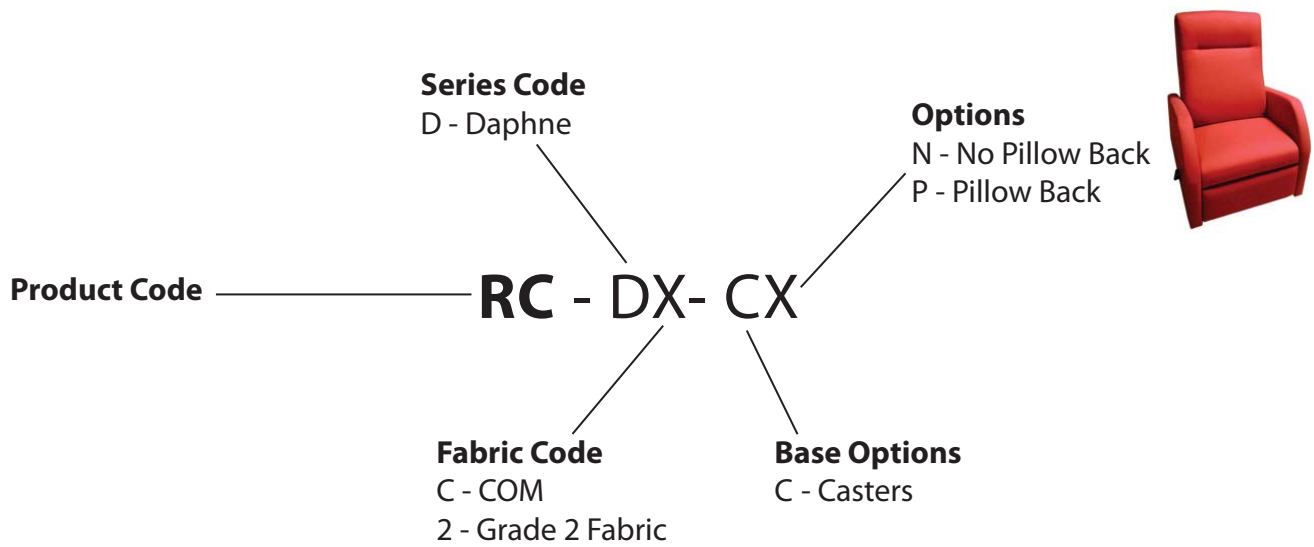
Block Party - Denim (61776)



Block Party - Glade (61770)

Recliner Chairs - Daphne Series

Ordering Guide

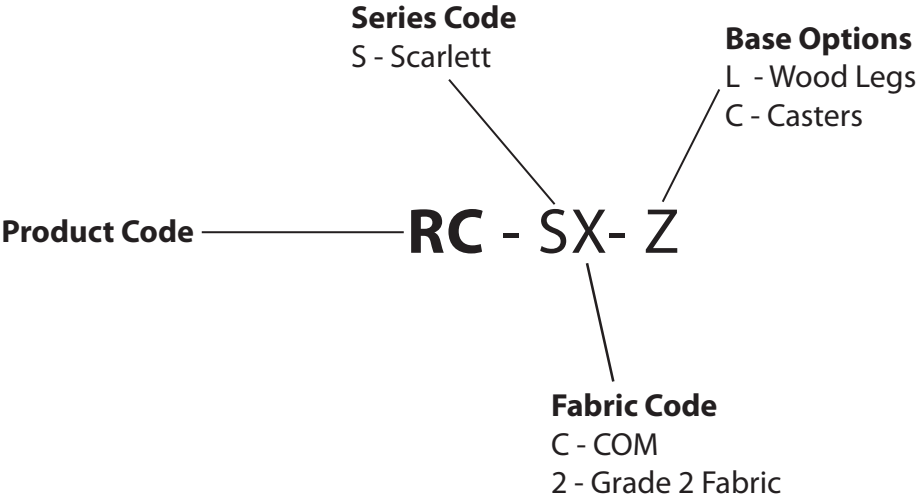


*For Bariatric add "B" to the end of the part number.

Example: RC-D2-CPB = Recliner Chair - Daphne Series, Grade 2 Fabric, Casters, Pillow Back, Bariatric*

Recliner Chairs - Scarlett Series

Ordering Guide



For Bariatric, add "B" to the end of the part number

Recliner Chairs - Tristan Series

Ordering Guide

When ordering recliner chairs, please specify the following information:



For Bariatric add "B" to the end of the part number.

*The classic Tristan comes with 3" casters (other accessories can be added)

**The standard Tristan comes with a push bar, one flip up table, foot transport tray and 5" casters (image shown above)